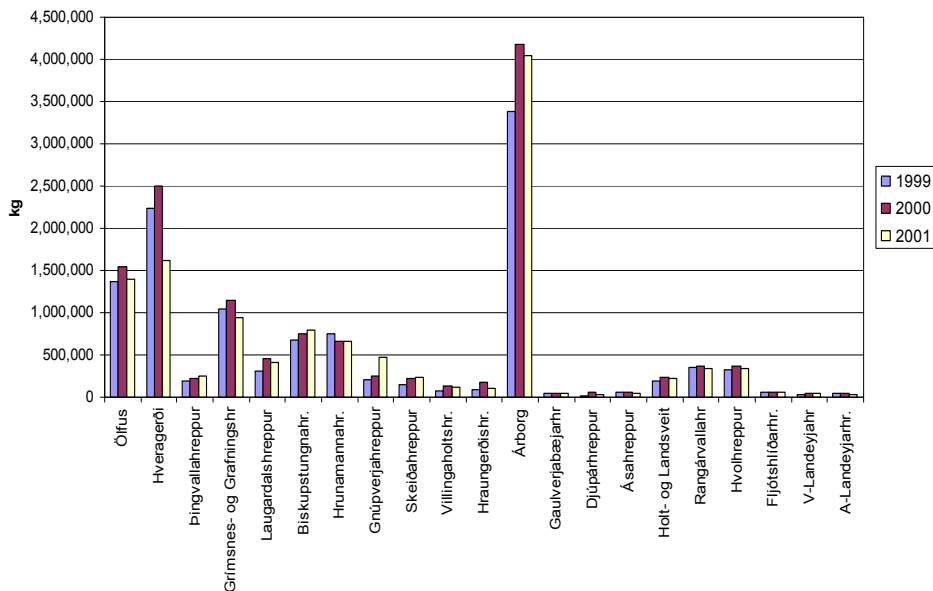


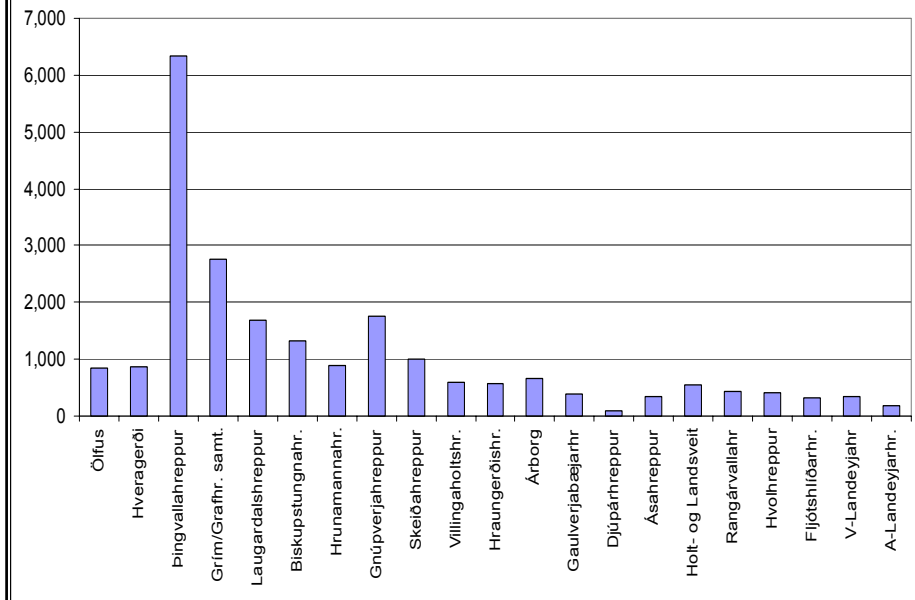


Aðalfundur Sorpstöðvar Suðurlands 2002  
haldinn á Selfossi 23. ágúst

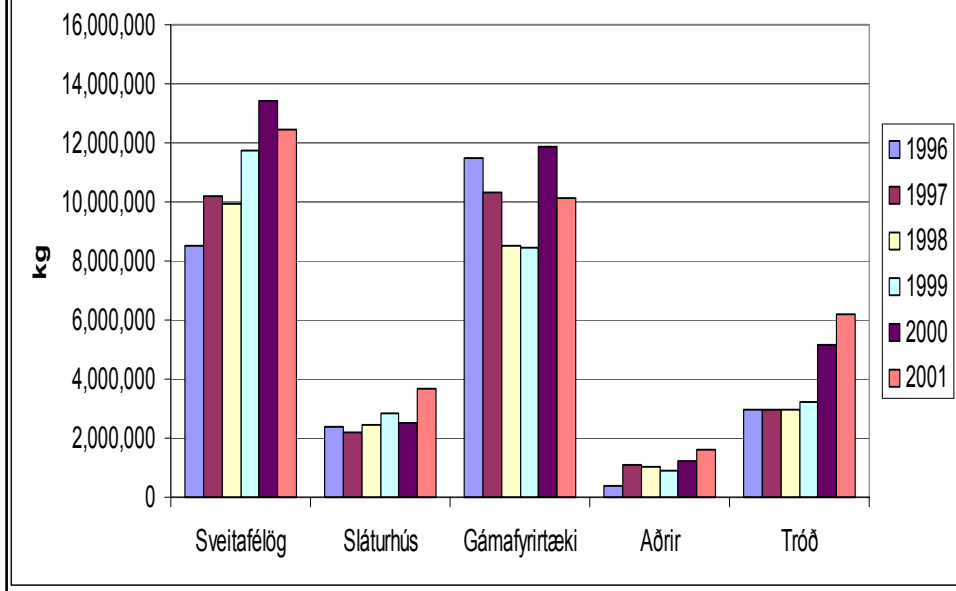
Sorp magn til urðunar á Kirkjuferjuháleigu.



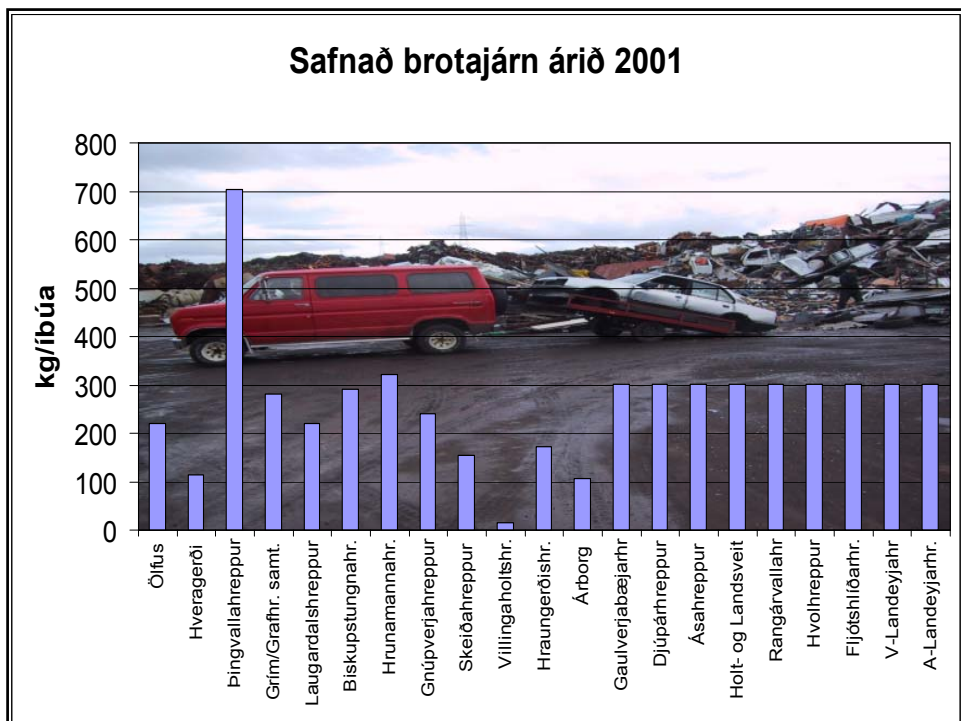
### Sorpmagn, kg / íbúa 2001





### Móttækið á Kirkjuferjuháleigu 1996 til 2001



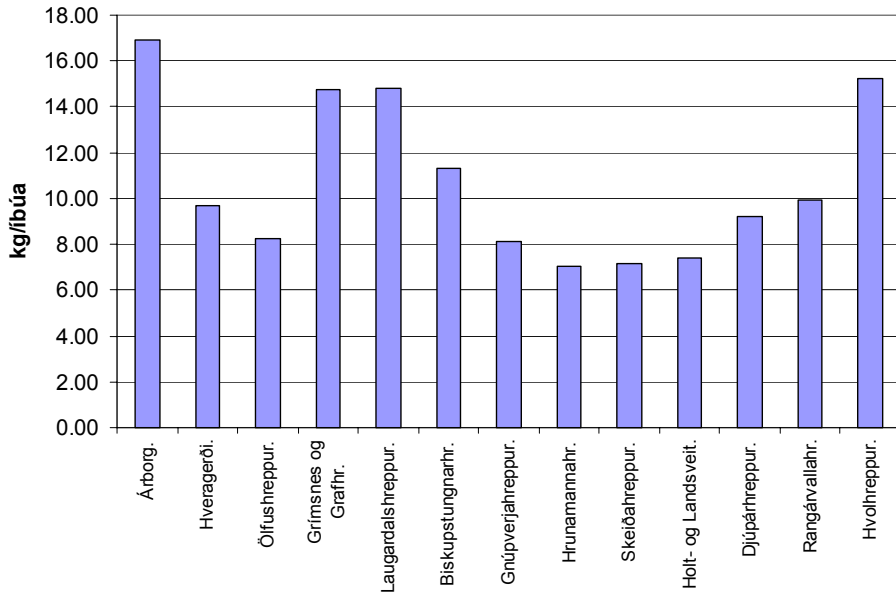
Úrgangur á svæði Sorpstövar Suðurlands						
	1997	1998	1999	2000	2001	spá 2002
<b>Kirkjuferjuhl</b>						
Sveitafélög	10,189,318	9,951,775	11,717,312	13,447,080	12,468,417	13,000
Sláturhús	2,170,376	2,454,140	2,813,344	2,517,050	3,685,350	700
Gámafyrirtæki, Rvk.						
Aðrir	1,103,330	1,006,680	897,911	1,213,488	1,597,550	1,000
<b>Sorpst. Rang. Strönd</b>						
<b>Samtals, urðun.</b>	<b>13,463,024</b>	<b>13,412,595</b>	<b>15,428,567</b>	<b>17,177,618</b>	<b>17,751,317</b>	<b>14,700</b>
Sláturúrgangur				1,198,700	2,800,000	3,500
Brotajám	1,722,820	2,307,490	2,708,000	3,346,000	2,800,000	3,800
Pappír	130,150	149,140	187,000	224,000	184,000	280
Femur	33,220	38,050	41,000	25,000	21,000	30
Skilagjalsumb	206,000	206,000	210,000	216,000	216,000	220
Spilliefni		43,846	57,300	229,109	233,000	250
Föt			24,000	36,000	39,000	40
Plast					20,000	10
Timbur					20,000	50
<b>Samt. endurv.</b>	<b>2,092,190</b>	<b>2,744,526</b>	<b>3,227,300</b>	<b>5,274,809</b>	<b>6,333,000</b>	<b>8,180</b>
<b>Samt. Urðun + endurv</b>	<b>15,555,214</b>	<b>16,157,121</b>	<b>18,655,867</b>	<b>22,452,427</b>	<b>24,084,317</b>	<b>22,880</b>
Hlutfall endurvinnslu	13	17	17	23	26	36



	Íbúar 1999	Heildarkostnaður	Innheimt gjöld	Heimilisúrg	Rekstranúrg	Brotajárn	Spilliefni	Pappír og fernur	Timbur	Gámasvæði	Magn úrgangs tonn/ár	Hluttur Sorpstóðvar Suðurlands / Sorpst Rang ( 1.000 kr)	Kr /kg bl. úrgangur	Kostnaður, þúsund kr/íbúa	Eyðingarkostn sem % af heildarkostn	Pappír og fernur kr/kg	Brotajárn kr/kg	Pappír og fernur tonn/1999	Brotajárn tonn/1999
A-Landeyjarhr.	203	1093	254							164	42	509	26.0	5.4	47%				
V-Landeyjah	158	743	0								36		20.6	4.7	0%				
Fijótslhjóarhr.	212	968	0								54	466	17.9	4.6	48%				
Hvolhreppur	766	5,337	2,594				2	196			316		16.3	7.0	0%	12.8		15.3	
Rangánvallahr	766	5,178	3,798								350		14.8	6.8	0%			10.4	
Holt- og Landsveit	377	1,296	289								190	5	6.8	3.4	0%	0.0		3.7	
Ásahreppur	125	1,105	0							185	54	380	20.5	8.8	34%				
Djúpárhreppur	239	1,037	510					63			19		51.3	4.3	0%	21.0		3	
Gaulverjabæjarhr	119	587	190			100					49	98	9.9	4.9	17%		1.9		54
Árborg	5,676	34,094	21,638			2,360		1,367	931		3,377	6,471	8.7	6.0	19%	10.7	2.8	127.6	835
Hraungerðishr.	175										83	164	0.0	0.0	0%		0.0		25
Villingaholtshr.	176	869	200			122					77	149	9.7	4.9	17%				8
Skeiðahreppur	240	1,130	326				4	45			143	283	7.6	4.7	25%	16.1	0.0	2.8	32
Gnúpverjahreppur	291	1,519	0			122	16	40			208	417	6.4	5.2	27%	22.2	3.7	1.8	33
Hrunamannahr.	726	9,581	3,163					193		423	753	2,000	12.5	13.2	21%	24.4	0.0	7.9	126
Biskupstungnahr.	508	4,335	3,352								647	1458	6.7	8.5	34%	0.0	0.0	6.4	111
Laugardalshreppur	257	2,770	2,015	1,904	670	170		26			315	614	8.2	10.8	22%	4.7	6.8	5.5	25
Grímsnes- og Gra	349	6,859	3,856	5,621		664	36				1,045	2,146	5.9	19.7	31%	0.0	4.3	7.2	153
Pingvallahreppur	49	1,216	963							120	190	379	6.4	24.8	31%				20
Hveragerði	1,766	9,599	7,394	8,481		826	5	286			2,234	3,980	3.8	5.4	41%	14.5	4.3	19.7	190
Sveitarfélagið Ölfu	1,647	10,397	5,630			963	28	207		2,367	1,361	2,585	6.8	6.3	25%	12.1	2.3	17.1	428
Rangársvýsla												2,270					0		669
<b>Samtals</b>	<b>14,825</b>	<b>98,620</b>	<b>55,918</b>	<b>16,006</b>	<b>670</b>	<b>5,327</b>	<b>91</b>	<b>2,423</b>	<b>3,095</b>	<b>11,543</b>	<b>24,374</b>			<b>25%</b>			<b>228.4</b>	<b>2709</b>	

	Íbúar árið 2000	Heildarkostnaður	Innheimt gjöld	Heimilisúrg	Rekstranúrg	Brotajárn	Spilliefni	Pappír og fernur	Timbur	Gámasvæði	Magn úrgangs tonn/ár	Hluttur Sorpstóðvar Suðurlands / Sorpst Rang ( 1.000 kr)	Kr /kg bl. úrgangur	Kostnaður, þúsund kr/íbúa	Eyðingarkostn sem % af heildarkostn	Pappír og fernur kr/kg	Brotajárn kr/kg	Pappír og fernur tonn/2000	Brotajárn tonn/2000
A-Landeyjarhr.	200	1891	270								46		41.1	9.5	0%				
V-Landeyjah	149	756	0								45		16.8	5.1	0%				
Fijótslhjóarhr.	197	1,119	0								53	445	21.1	5.7	40%				
Hvolhreppur	796	6,104	2,991				4	229			371		15.8	7.7	0%	16.4		14	
Rangánvallahr	793	5,642	4,536					180			363		15.0	7.1	0%				
Holt- og Landsveit	371	2,071	291								233	73	8.9	5.6	4%	0.0		4	
Ásahreppur	144	1,646	0								60	251	27.4	11.4	15%				
Djúpárhreppur	253	1,321	0			84		70			58		20.1	5.2	0%	17.5		4	
Gaulverjabæjarhr	133	614	252								50	118	12.3	4.6	19%		0.0		44
Árborg	5,856	40,646	22,424			2,069		1,762	811		4,173	9899	8.6	6.9	24%	12.9	1.9	137	1064
Hraungerðishr.	174	1,395	545			103					171	370	7.6	8.0	27%		4.5		23
Villingaholtshr.	183	1,230	284			171					129	304	8.2	6.7	25%		24.4		7
Skeiðahreppur	250	1,830	844			28	19	64			221	497	7.8	7.3	27%	32.0	0.4	2	66
Gnúpverjahreppur	285	2,841	1,155			582	11	70			252	623	8.6	10.0	22%	23.3	2.9	3	199
Hrunamannahr.	726	9,367	4,120					108		439	661	1524	13.3	12.9	16%	13.5	0.0	8	246
Biskupstungnahr.	550	5,557	3,413								748	1624	7.4	10.1	29%	0.0	0.0	11	154
Laugardalshreppur	249	2,850	2,300	1,950	500	170		38		190	450	930	5.4	11.4	33%	6.3	1.9	6	90
Grímsnes- og Gra	328	9,211	7,476	8,339		256	101				1,145	2611	7.7	28.1	28%	0.0	1.0	11	262
Pingvallahreppur	43	1,295	959								220	462	5.9	30.1	36%				15
Hveragerði	1,813	12,151	6,993	10,737		1,133	70	213			2,503	6,168	4.3	6.7	51%	8.5	4.5	25	252
Sveitarfélagið Ölfu	1,687	12,664	6,208			1,319	35	289		2,447	1,537	3,255	5.6	7.5	26%	17.0	3.0	17	438
Rangársvýsla												3,065					0	9	813
<b>Samtals</b>	<b>15,180</b>	<b>120,310</b>	<b>64,791</b>	<b>21,026</b>	<b>500</b>	<b>5,915</b>	<b>240</b>	<b>3,023</b>	<b>3,076</b>	<b>13,489</b>	<b>32,219</b>			<b>27%</b>			<b>251</b>	<b>3673</b>	

## Árangur pappírssöfnunar árið 2001



## Samanburður á árangri pappírssöfnunar milli ára 2000 og 2001

